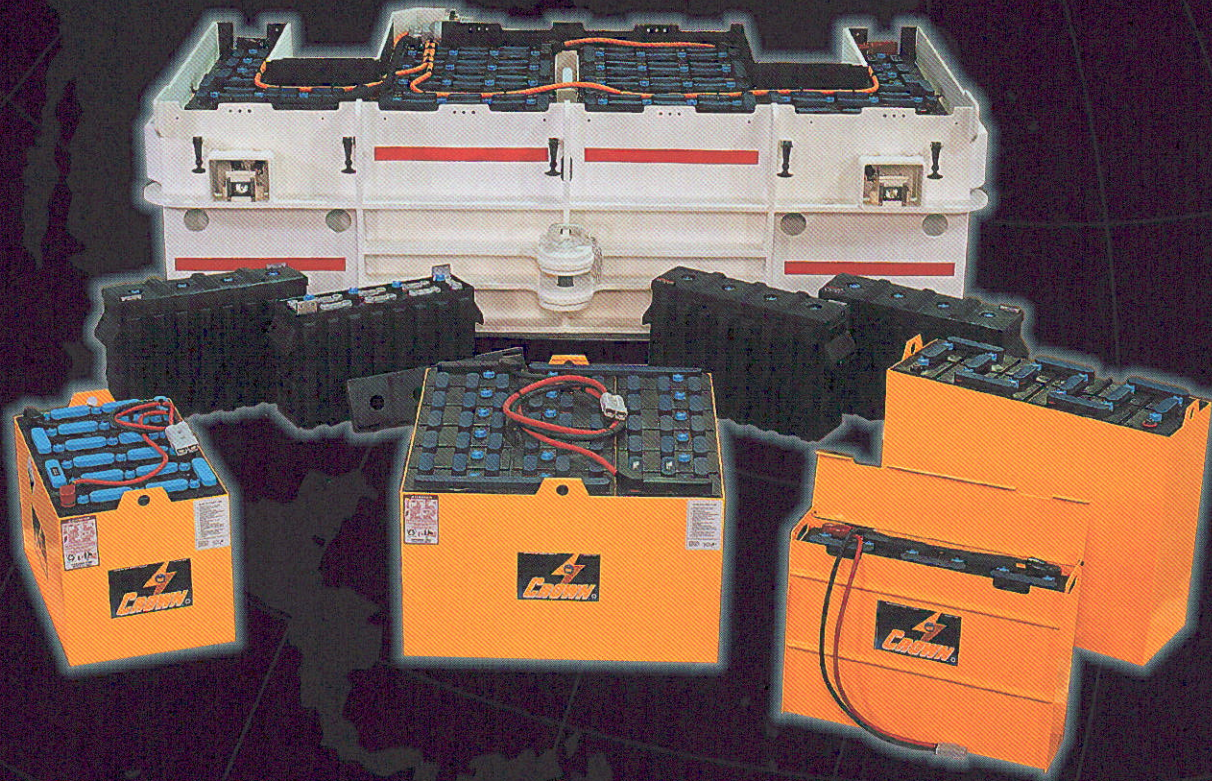


Only the Best,  
All the Time.



MOTIVE POWER

[www.crownbattery.com](http://www.crownbattery.com)

INDUSTRIAL BATTERIES



# Only the Best, All the Time.

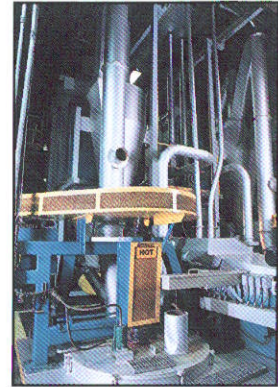
Crown provides its customers with only one grade of battery -- the very best. Crown has never manufactured a second grade or lesser brand of battery like some of our competitors. We take pride in making every component, every step of our manufacturing process, the very finest it can be. That takes a unique dedication to excellence.

Crown Battery Mfg. Co. is surprising its customers and its competitors alike with not only Crown's quality, but with Crown's measured and managed balance of automatic processes and precision craftsmanship.

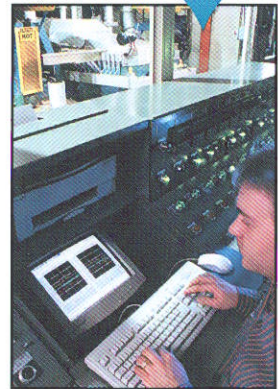
*Attitude -- that's what sets Crown apart!*

*We will manufacture only the finest batteries! We will go anywhere around the world! We will do whatever it takes to get your business!*

## It's Simple - Crown Batteries WORK!



Oxide Mill



Process Control



Plate Wrapping



Cell Burning



Forming Room

# Take Advantage of the Crown Difference

Crown Battery is the only company to utilize total POSIWRAP™ PROTECTION, the most insulated industrial batteries available on the market.

### POSIWRAP™ PROTECTION includes:

**Positive Grid:** Thirteen vertical wires are cast from premium antimonial alloy and designed to withstand the rigors of deep cycling and maximum current capabilities. Offset internal wires are designed for less internal resistance and maximum active material retention.

**Active Material:** Manufactured with premium lead oxide from our own oxide mill to exact specifications using the latest state-of-the-art equipment, applied uniformly and cured under atmospherically computer controlled conditions to assure optimum chemical conversion.

**Vertical Silyer-clad Mat:** Wrapped vertically around the positive plate, the fiberglass strands become embedded into the plate surface for active material retention, reducing shedding and prolonging service life.

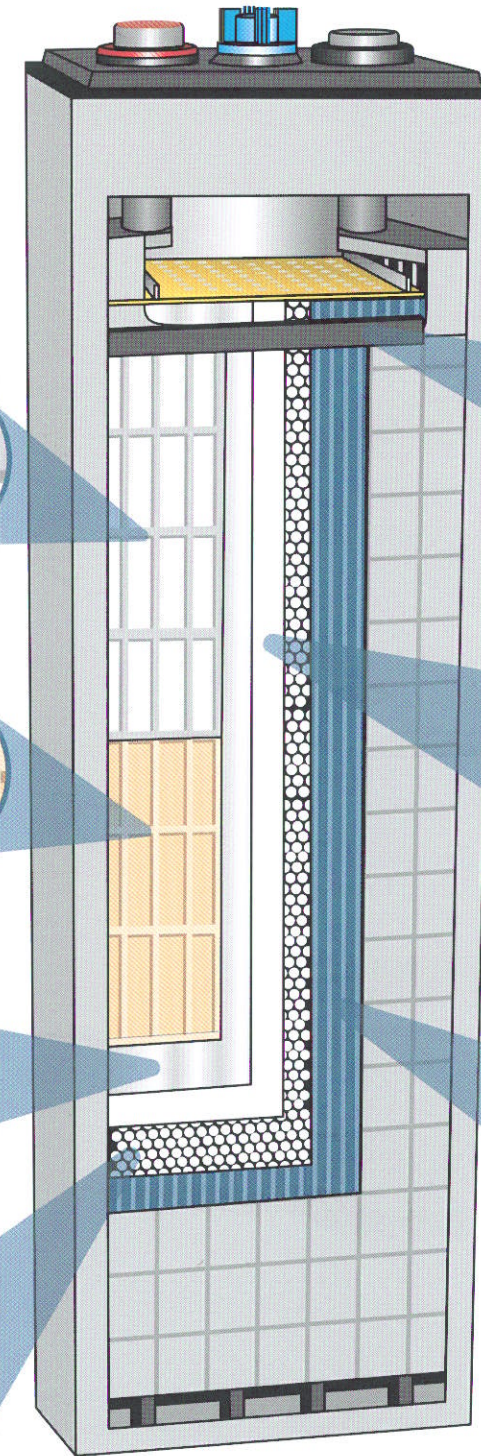
**Koroseal Retainer Mat:** Perforated envelope that is tightly wrapped around the two glass mats to form a binder while insulating against mousing and shorting.

# THERE IS A DIFFERENCE

PROVEN & TESTED TECHNOLOGY THAT WORKS

What this means for you:

- ⚡ More powerful and longer life
- ⚡ Less lead exposed to acid
- ⚡ Holds active material the longest
- ⚡ Reduced internal resistance



**Negative Edge Protection:**

Used to ensure against shorts from the negative plate to the positive cell strap. (Used on 85 AH and 125 AH models)

**Horizontal Glass Mat:**

Wrapped horizontally across the positive plate side to side, it supplies a secondary layer of active material retention, and breaks up oxygen gas bubbles produced at the surface of the positive plate.

**Sleeve Separator:**

A high porosity, sleeved separator insulates the plates from one another and eliminates missing or misaligned separators. This greatly reduces shorts caused by mousing. Acid circulation is also improved.



Automated Cell Assembly Line



Finishing Line

Only the Best,  
All the Time.

